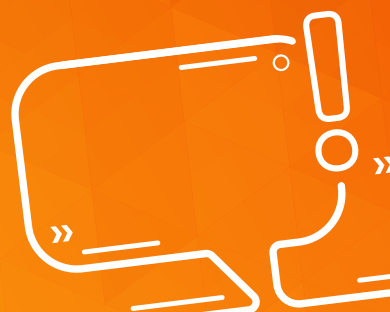


WHERE
insights LEAD TO
answers



Expect more from your discovery and development CRO

In Vivo Services

DISCOVERY

- Pharmacology and toxicology assessment
- Drug metabolism and pharmacokinetics
- Pharmacology/pharmacodynamic model co-development
- Toxicogenomics
- Computational toxicology

REGULATORY-ENABLING SAFETY ASSESSMENT

- Acute through chronic GLP toxicology with toxicokinetics
- Safety pharmacology
- Genetic toxicology
- Carcinogenicity studies including transgenic mice
- Developmental and reproductive toxicology
- Program management to keep your project on schedule and on budget

DMPK

- *In vitro* metabolism and PK screening
- Metabolite ID, soft spot analysis
- *In vitro* drug-drug interactions (CYP and transporters)
- PK/TK analysis

Histology and Pathology

- Standalone or fully integrated with *in vivo* services
- Discovery through regulated toxicologic pathology
- Primary evaluations and peer reviews
- Board-certified pathologists (ACVP)
- Pharmacologic, clinical, medical device, and digital pathology
- Immunohistochemistry and immunofluorescence, *in situ* hybridization, quantitative microscopy, image analysis, stereology, histomorphometry, and specialty stains

Surgical Models and Medical Device Testing

- GLP and non-GLP *in vivo* testing
- Broad portfolio of techniques
- Trained veterinary surgeons
- Multiple surgical suites
- State-of-the-art imaging
- Histology and Analysis
- Antibody Labeling (IHC)
- Histomorphometric analysis for medical devices

Bioanalysis

- Phase-appropriate discovery method validation
- Regulatory enabling (GLP, GCP) method development, validation, and transfer
- Clinical/nonclinical studies supporting safety and efficacy
- Nonclinical and clinical fluids and tissues
- Dose formulation analysis

SMALL MOLECULE

- AB SCIEX™ LC-MS/MS platform (small molecule, peptides, oligonucleotides)
- High-resolution mass spectrometry (HRMS)
- Liquid handling and assay automation

BIOTHERAPEUTICS

- Peptide/protein therapeutics, monoclonal antibodies, cell and gene therapies, and ADCs (PK and immunogenicity)
- Molecular biology (DNA/RNA/proteins)
- Cytokine panels (inflammatory markers)
- Flow cytometry (immunophenotyping)
- Pharmacokinetic (PK), toxicokinetic, and immunogenicity (ADA and Nab) assessments
- Ligand binding assay (ELISA, ELISpot, MSD, BioPlex™, and Luminex®)
- Biomarkers for single and multiplex assay

Clinical Support

- Custom clinical trial kit preparation with sampling instructions
- Bioanalysis and PK data analysis
- *In vitro* and *in vivo* bioequivalence studies
- Biomarker analysis
- Drug-drug interactions

Research Models and Services

- Research models and support
- Research services including custom model generation, contract breeding, antibody production, surgery services, and more
- Teklad diet, bedding, and enrichment

You deserve a broad scope of right-sized solutions that seamlessly align with your needs and goals. Talk to us.